

GENERAL:

The Super Sidekick is a very versatile dynamic amplified base station microphone. It can be adapted for use with most base station transmitters, with transistorized (low impedance) and tube type (high impedance).

Base Station
Communications



**SUPER
SIDEKICK**
Figure 1

SPECIFICATIONS

for

SUPER SIDEKICK

The Super Sidekick has been designed specifically for the CB, Business Band and communications field. The Super Sidekick utilizes an integrated circuit amplifier. The Super Sidekick, with its adjustable output, has the capacity of fully modulating any transmitter. See application section for details.

The Super Sidekick utilizes a dynamic interior for extreme ruggedness and durability and is unaffected by temperature and humidity.

The Super Sidekick has an integrated circuit amplifier with low impedance output and can be used with any transmitter with an input impedance of 100 ohms or more. The integrated circuit is a self-contained package which contains 6 transistors (Figure 4). The amplifier is constructed on a printed circuit board with point to point wiring for ease of component replacement.

The Super Sidekick uses a rugged die cast case. The base and neck are black with a polished bright chrome head. The cable is 3 conductor 1 shielded coiled cord with black PVC jacket.

The Super Sidekick is activated by pressing down on the touch bar and can be locked on by moving the slide lock forward.

Output Level: Maximum output — 25 db, Adjustable.

(0 db = 1 volt per microbar)

Output Impedance: 100 ohm

Temperature Range: —30°C to +60°C

Battery Drain: 3.0 ma.

Battery Life: Approx. 6 months based on usage

Battery Type: Burgess 21US, Eveready 21B, Ray-ovo 1604, or RCA VS-012. Battery is included.

Weight: 2 lbs. Shipping weight: 4 lbs.

Cable: 3-conductor, 1 shielded, coiled cord with black PVC jacket.

Finish: Black base and neck; Polished bright chrome head.

Switching: Adapts to relay or electronic (See

Figures 2 and 3). White lead is signal lead and shield is cable and microphone ground.

TURNER MICROPHONES

TURNER DIVISION OF COMARC CORPORATION
600 17th Street N.E., Cedar Rapids, Iowa 52402
(319) 395-0421 • Telex: 454437

FIGURE 2

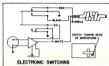


FIGURE 3

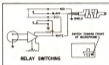


FIGURE 4

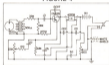
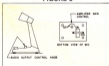


FIGURE 5



WARRANTY

All Turner microphones are individually and thoroughly tested before leaving the factory and are guaranteed by the Turner Division, Conrac Corporation, against defective materials and workmanship for one year, provided that the instructions are fully complied with and that the units are not opened, except for battery replacement, or tampered with in any way. Microphones covered by this warranty should be returned to the factory and will be repaired or replaced at no cost other than transportation one way.

TURNER SUPER SIDEKICK

APPLICATION:

The Super Sidekick can be easily adapted to almost any transmitter. The white-wire is the signal ("hot") lead and the shield provides a ground connection between microphone case and transmitter case/ground. The black and red leads provide the necessary control switching as shown in Figures 2 and 3. When replacing another microphone with a Super Sidekick, consult the equipment manual for proper wiring of the connector (if connector is used) and for proper position of the slide switch located on the bottom of the Super Sidekick. If an equipment manual is not available, then care should be taken to analyze the microphone being replaced to determine connector connections and type of switching needed. Experience indicates that most difficulties in replacing a microphone occur as a result of poor workmanship in making up the connector. Avoid excessive heat which can damage insulation and keep exposed leads short to prevent shorting within the connector.

In case of difficulty, please do not tamper with the microphone as this will void the factory warranty. Contact factory for further instructions.

HOW TO ADJUST YOUR NEW SUPER SIDEKICK TO YOUR TRANSCIEVER:

In order to adjust your Super Sidekick microphone turn the top control to the maximum clockwise position and adjust the bottom gain control for 100% modulation. If by adjusting the top control to clockwise you achieve 100% modulation no adjustment of the bottom control is required as your microphone is matched.

Once the amplifier gain control on the bottom of the mic is adjusted to your satisfaction, it should not be tampered with. To determine the proper adjustment we suggest that you hook the microphone to your set and adjust only the audio output control on the top of the base for the first transmission. In many cases the control on the bottom of the mic may not need adjusting. If you do not have the output you desire, then you may adjust the screwdriver adjustment on the bottom of the mic to achieve your desired level.

On tube type sets, the bottom control will more than likely need adjusting. On transistorized sets this may not be necessary.

BATTERY REPLACEMENT:

The battery in the base of the microphone should be replaced as needed with one of the types listed under "Specifications." Turn the battery hold down spring clamp 90 degrees and remove the battery. Uncouple the connector from the battery and install a fresh battery making sure the new battery is in position and well secured by the spring clamp.

TURNER MICROPHONES

TURNER DIVISION OF CONRAC CORPORATION
908 17th Street N.E., Cedar Rapids, Iowa 52402
(319) 265-0421 • Telex 284427

CONRAC

PRINTED IN U.S.A.